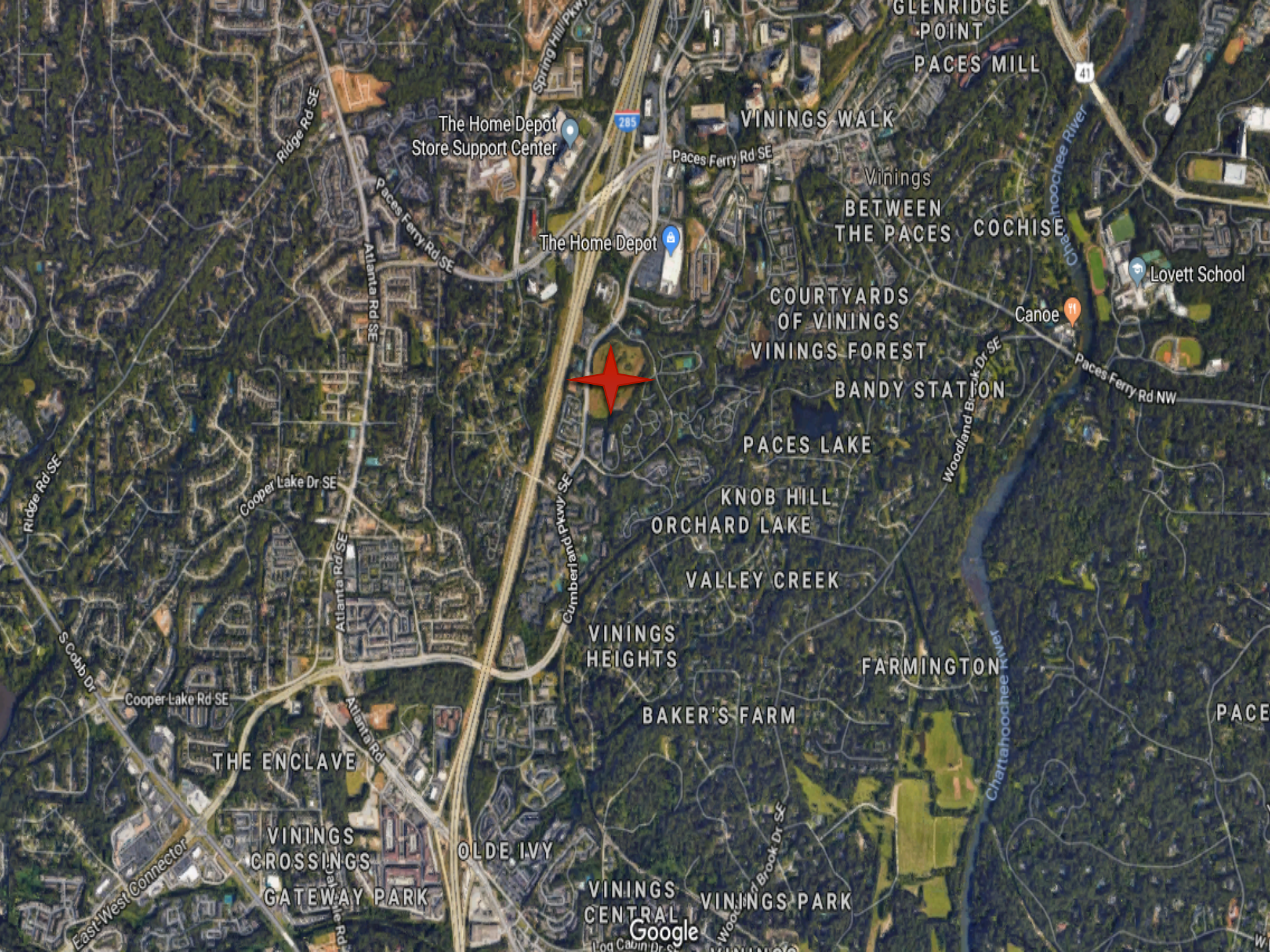




Vinings Atlanta

By: Marcela Dib
REE 5884 – Land Use Regulation



GLENRIDGE POINT
PACES MILL

The Home Depot
Store Support Center

VININGS WALK

Vinings
BETWEEN THE PACES
COCHISE

The Home Depot

Lovett School

COURTYARDS OF VININGS
VININGS FOREST

Canoe

BANDY STATION

PACES LAKE

KNOB HILL
ORCHARD LAKE

VALLEY CREEK

VININGS HEIGHTS

FARMINGTON

BAKER'S FARM

PACE

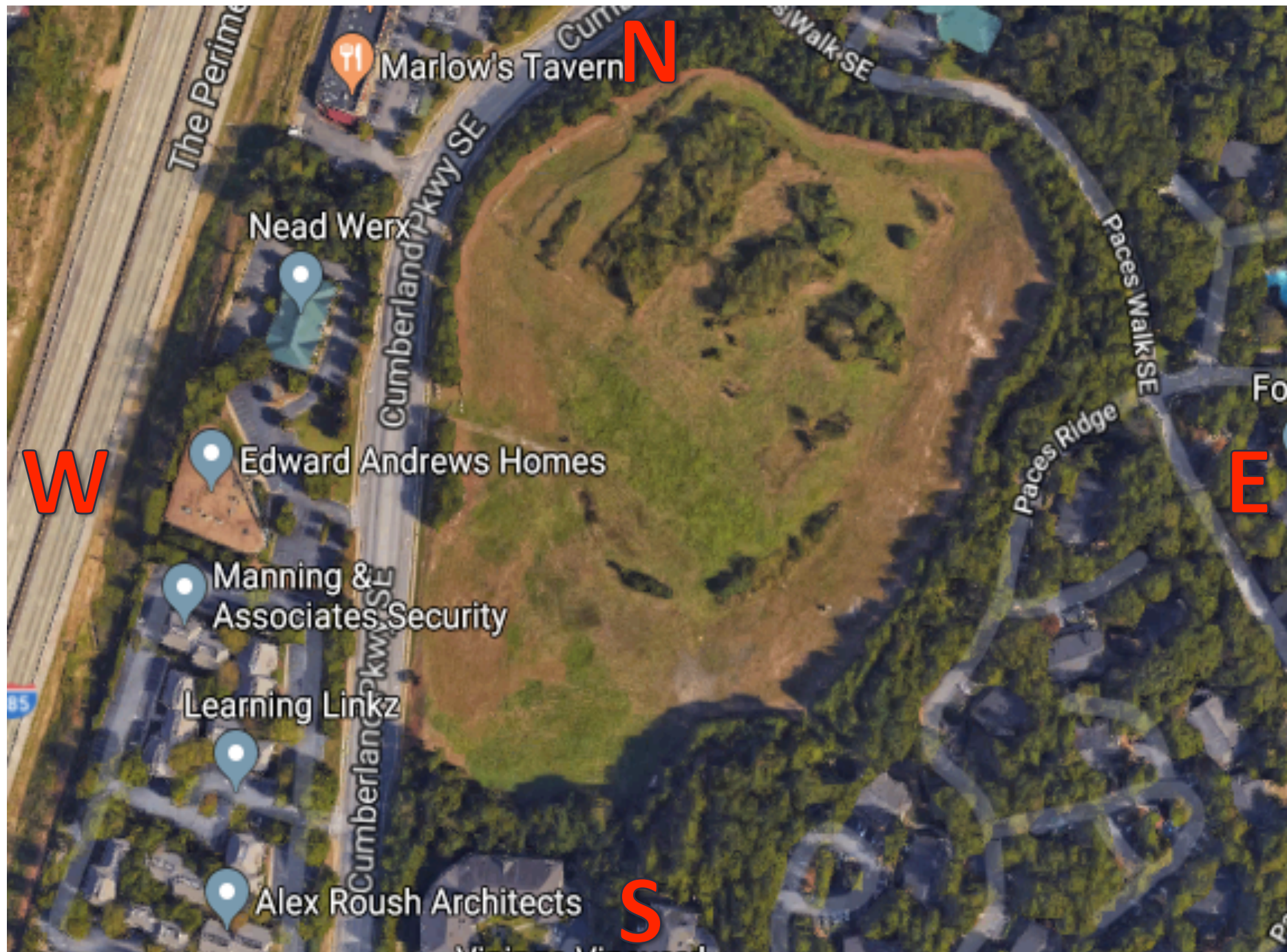
THE ENCLAVE

VININGS CROSSINGS
GATEWAY PARK

OLDE IVY

VININGS CENTRAL
VININGS PARK

Google



Marlow's Tavern **N**

Nead Werx

W Edward Andrews Homes

Manning & Associates Security

Learning Linkz

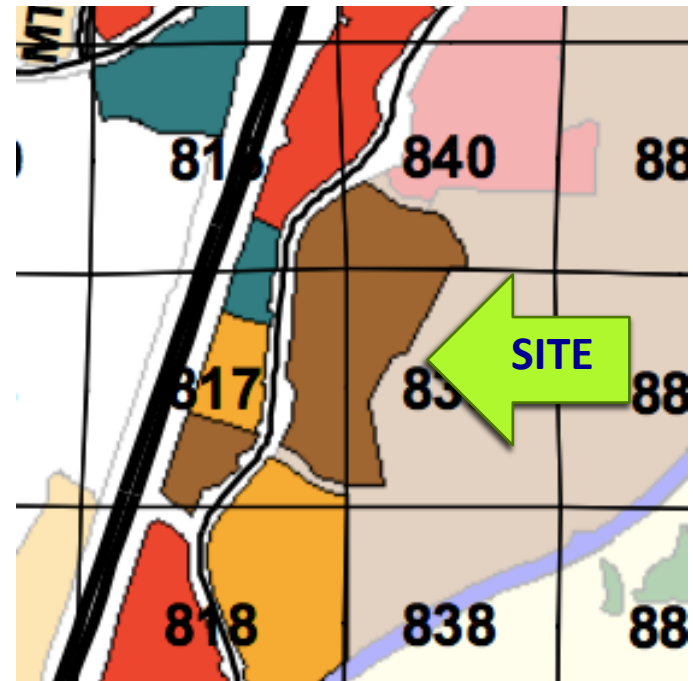
Alex Roush Architects **S**

E

85

Zoning

- Jurisdiction: Cobb County - Georgia
- Comprehensive Plan Land Use Designation: Regional Activity Center
 - Subcategory: High Density Residential
- Zoning: Community Retail Commercial





How to Get the Project Approved

- Identify stakeholders
 - Vinings HOA
 - Paces HOA
 - Vinings Vineyard Residents
- Work with the community
- Follow the staff's recommendations

